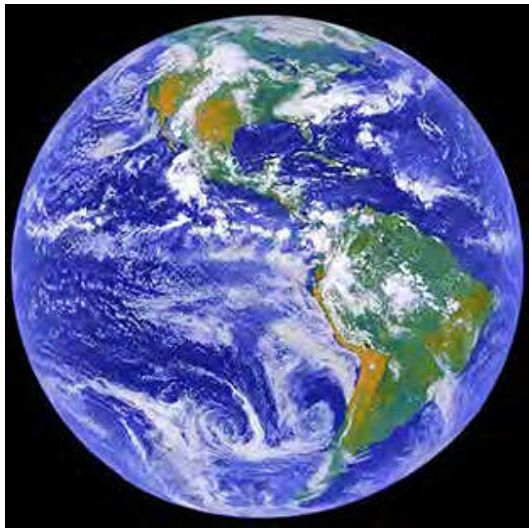


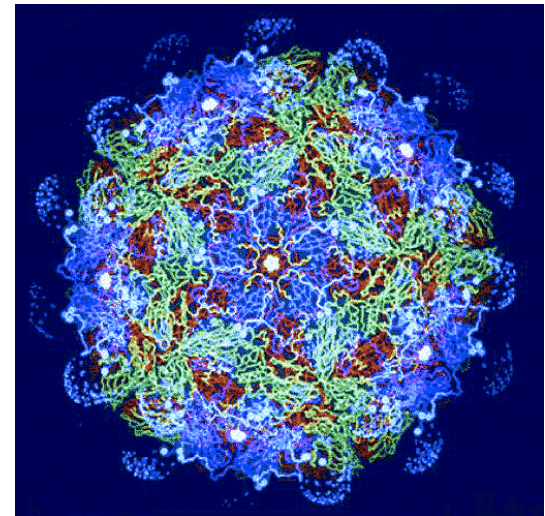
# Living With Environmental Change

**LWEC**



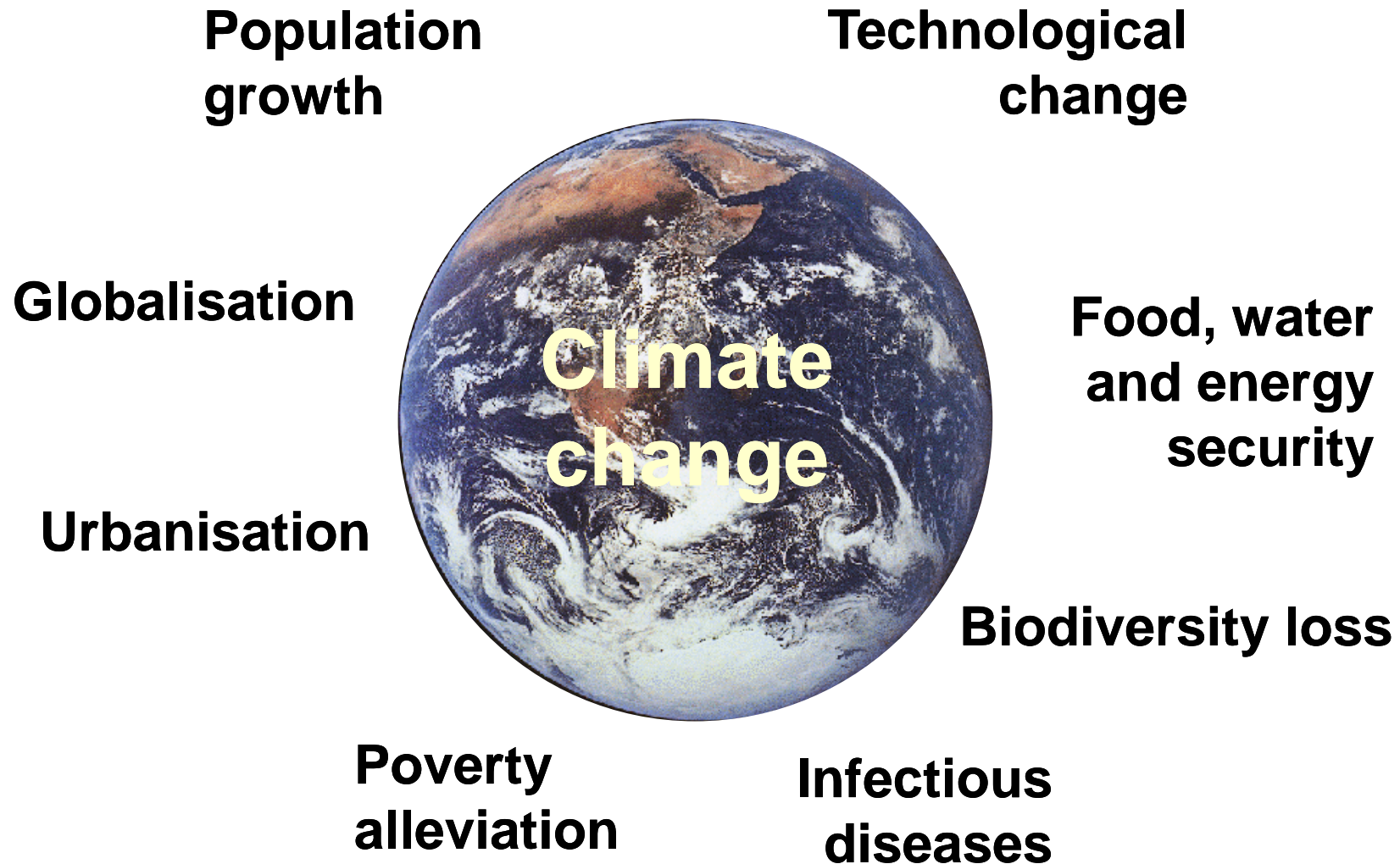
Andrew Watkinson  
LWEC Director

University of East Anglia



# Key global challenges

---



The logo for Living With Environmental Change (LWEC) features the text "Living With Environmental Change" in a black sans-serif font, with "LWEC" in a smaller, bold, black sans-serif font below it. The text is enclosed within a light green oval shape that has a slight gradient and a shadow effect.

Living With  
Environmental Change  
LWEC

- The LWEC partnership brings together **20 UK organisations** funding, undertaking and using environmental research.
- To **accelerate the delivery of research** on environmental change into policy and business by **aligning research, policy and business needs** through a process by which research is **co-designed and co-produced**.
- To provide government, business and society with **foresight, knowledge and tools** for UK leadership in mitigating, adapting to and capitalising on environmental change

# Living With Environmental Change LWEC



Arts & Humanities  
Research Council



NATURAL  
ENVIRONMENT  
RESEARCH COUNCIL



Communities  
and Local Government

EPSRC

Engineering and Physical Sciences  
Research Council



DFID  
Department for  
International  
Development

Technology Strategy Board  
Driving Innovation



Llywodraeth Cynulliad Cymru  
Welsh Assembly Government

Department for  
*Transport*



Local Government Association



# LWEC Objectives

---

1. To predict the impacts of **climate change** and to promote sustainable solutions through mitigation and adaptation
2. To manage **ecosystems** for human well-being and protect the natural environment as it changes
3. To promote human well-being, alleviate poverty and minimise waste by ensuring a sustainable supply of **food and water**
4. To protect human, plant and animal **health** from diseases, pests and environmental hazards
5. To make **infrastructure, the built environment and transport** systems resilient to environmental change
6. To understand how **people** respond to a changing environment and develop thriving, cohesive and informed communities

# LWEC Objectives

---

1. To
2. To
3. To
4. To
5. To
6. To

**How do we deliver a low carbon society?**

impacts of **cl**  
mitigation and  
**systems** for  
changes  
an well-bei  
ble supply  
, plant and  
ards  
**structure, th**  
environme  
ow **people**  
hesive and

**How do we ensure food, water and human security?**

and to pro  
being and  
poverty and  
**water**  
h from dis  
**nment an**  
changing e  
nmunities

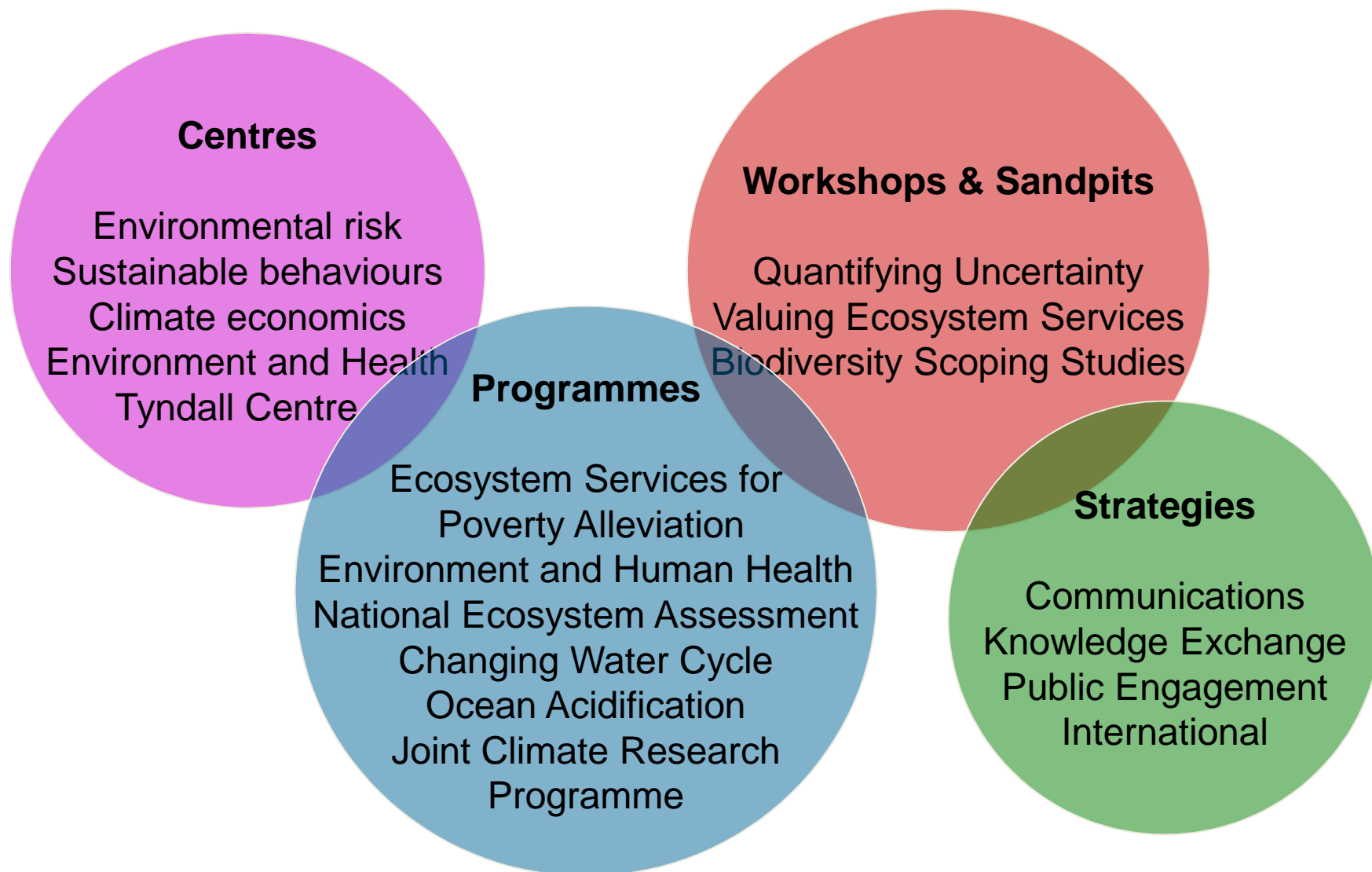
**How do we increase the resilience of vulnerable people, places and infrastructure?**

able  
cultural  
ste by  
nd  
nd



# LWEC Activities

---



# Engaging the AHRC community

---

1. Histories of environmental change
2. Representing environmental change
3. Knowledge and value
4. Material culture and sustainability





# Living With Environmental Change LWEC



**How** do we best work together to produce world class science that meets the needs of society?

