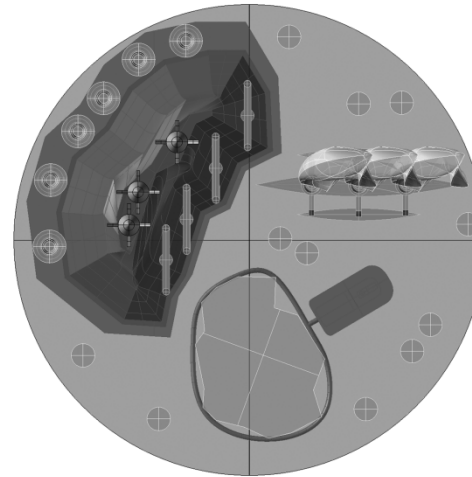




Kathryn Yusoff, Geography, University of Exeter | Jennifer Gabrys, Design, Goldsmiths, University of London
Researching Environmental Change, AHRC workshop, 07 April 2009



Weather modification key



Space mirror



Sun-reflecting sea disk



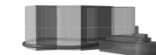
Sulphur rocket



Silver iodide cloud seeder



Carbon tree



Iceberg-towing tug

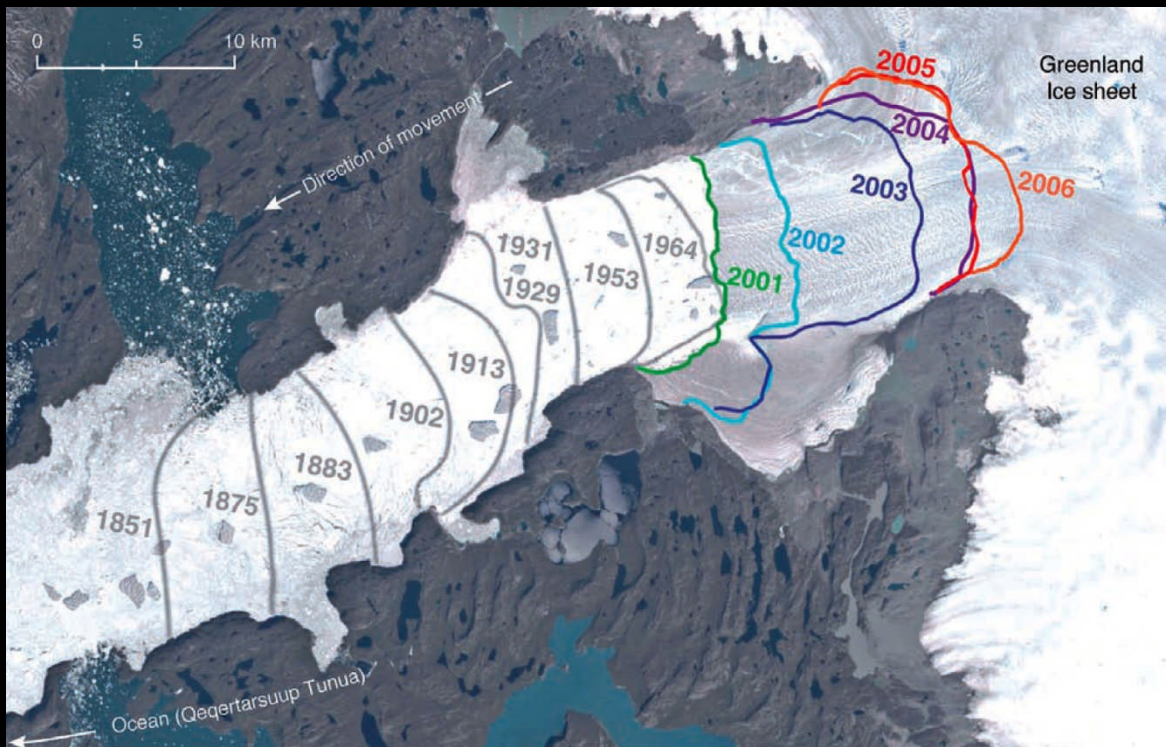


Cloud-seeding yacht

TheArtsCatalyst
the science-art agency



Forecast Factory, a project by Weather Permitting (www.weatherpermitting.org), commissioned through 'Curating Climate Change', an Arts Council England funded project, 2007-2008
All images © Weather Permitting unless noted. Back image: *Self-propelled iceberg*, Fuhs et al., 1977



Ilulissat icefjord (2007); Landsat image of Ilulissat, NASA (2006)



FLUIDS: A HAPPENING BY ALLAN KAPROW

DURING THREE DAYS, ABOUT TWENTY RECTANGULAR ENCLOSURES OF ICE BLOCKS (MEASURING ABOUT 30 FEET LONG, 10 WIDE AND 8 HIGH) ARE BUILT THROUGHOUT THE CITY. THEIR WALLS ARE UNBROKEN. THEY ARE LEFT TO MELT.

—ALLAN KAPROW, 1967

FROM FRIDAY, APRIL 25, THROUGH SUNDAY, APRIL 27, 2008, IN CONJUNCTION WITH THE EXHIBITION *ALLAN KAPROW—ART AS LIFE* (PRESENTED AT THE GEFFEN CONTEMPORARY AT MOCA), LACMA WILL COORDINATE THE REINVENTION OF ALLAN KAPROW'S *FLUIDS*. FIRST REALIZED IN 1967, *FLUIDS* WILL BE BUILT BY VOLUNTEERS AT SITES ACROSS THE CITY.

Zero Degrees—Questions:

- Where are the meeting places of arts and humanities and sciences in relation to climate change?
- Given its far-reaching impacts, how does climate change make demands on the usual categories, practices and disciplines we employ for understanding the world...?
- How does a realignment of the disciplines of arts and sciences ... expand the possibilities of public engagement and democratic participation?

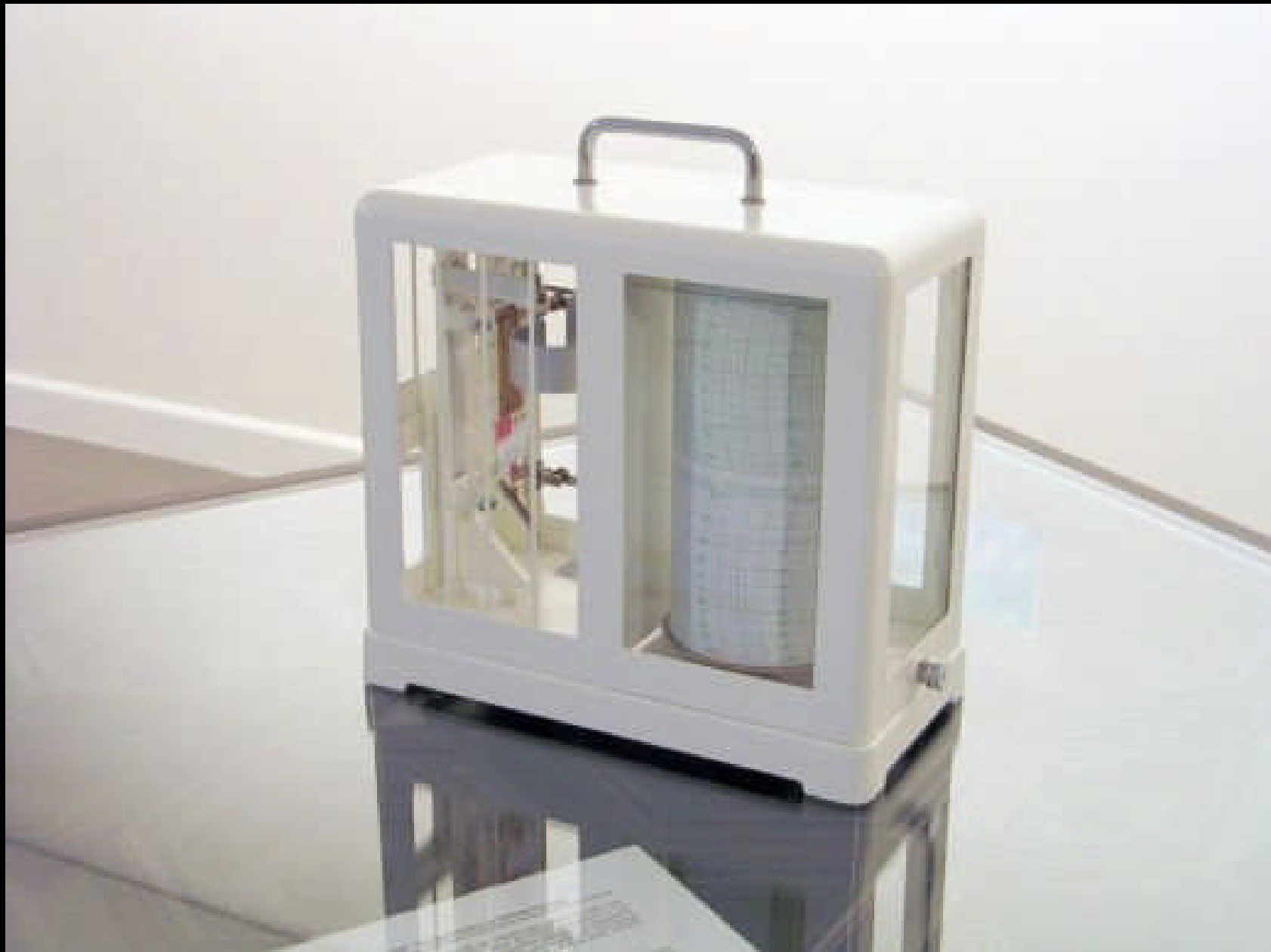
TOWARD A NEW ENVIRONMENT

The Powers of Nature and Man

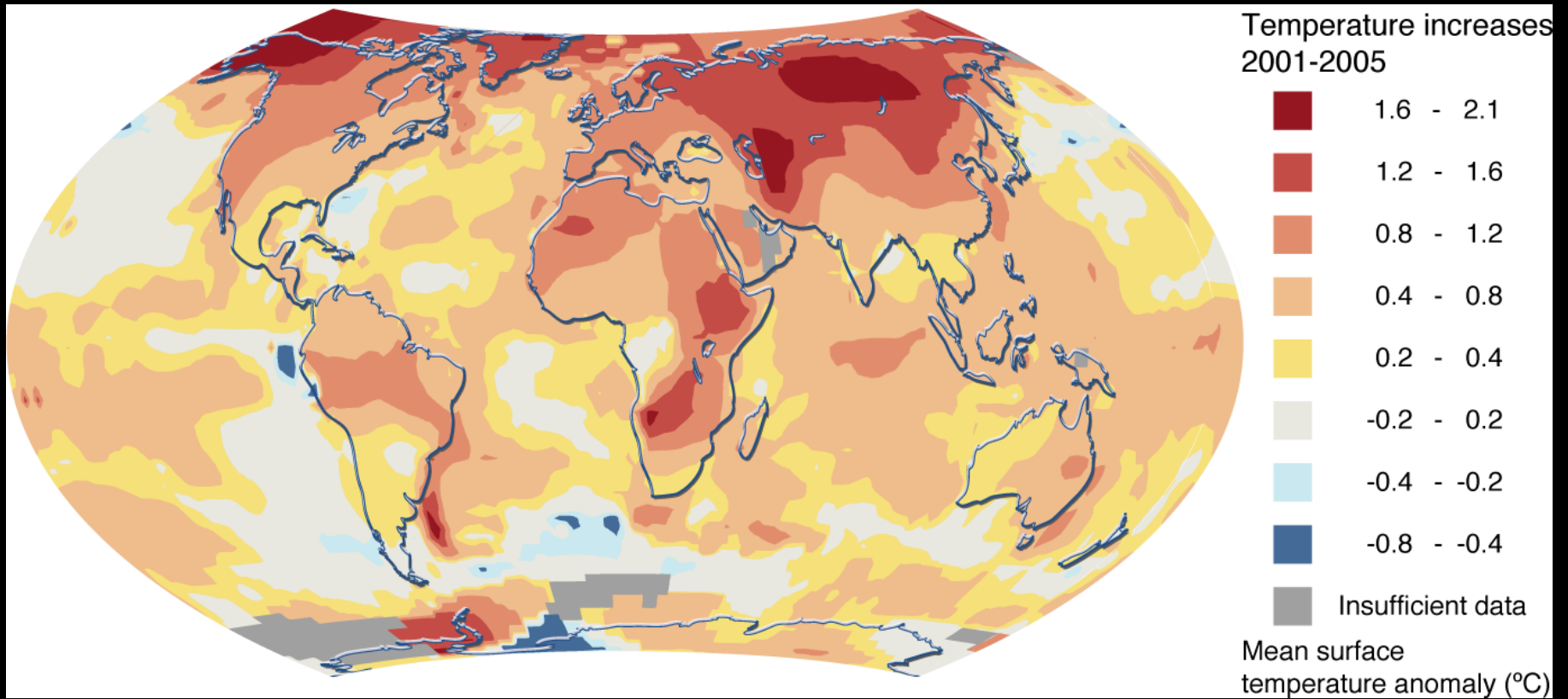
Fig. 1. Nebulae. Courtesy Mount Wilson and Palomar Observatories.



"Arts of the Environment," Gyorgy Kepes (1972)



"Exceeding 2 degrees," Tue Greenfort (2007)



PUBLIC SMOG IS A PARK
IN THE ATMOSPHERE
THAT FLUCTUATES IN
LOCATION AND SCALE

PUBLIC SMOG IS A
SCHEME TO BUY BACK
YOUR RIGHTS ON
THE OPEN MARKET



PUBLIC SMOG

HOME

- ECONOMICS EXPLAINED
- ECONOMICS EXPLAINED
- LOWER PARK: ABOUT
- UPPER PARK: ABOUT
- HOW CAN I PUBLIC SMOG?
- WHY PUBLIC SMOG?
- NEWS
- LONG-TERM FORECAST
- EN FRANÇAIS
- GREENHOUSE GASES
- CO₂ - Carbon Dioxide
- Carbon Dioxide (CO₂) is released when fossil fuels (coal, oil and gas) are burned. The increased CO₂ in the atmosphere is causing global warming.
- CH₄ - Methane
- Methane (CH₄) is emitted during the production and transport of coal, natural gas, and oil. Methane emissions also result from the decomposition of organic wastes in municipal solid waste landfills, and the raising of livestock.
- N₂O - Nitrous Oxide
- Nitrous Oxide (N₂O) is primarily emitted to the atmosphere from biological activity in soil and water, both natural and anthropogenic. Nitrous Oxide accounts 270 times more heat per molecule than carbon dioxide.

PUBLIC SMOG is a park in the atmosphere that fluctuates in location and scale. The park is constructed through financial, legal, or political activities that open it for public use.

Activities to create Public Smog have included purchasing and retiring emission offsets in regulated emissions markets, making them inaccessible to polluting industries.

When Public Smog is built through this process, it exists in the unified public airspace above the region where offsets are purchased and withheld from use. The park's size varies, reflecting the amount of emissions allowances purchased and the length of contract, compounded by seasonal fluctuations in air quality.

Other activities to create Public Smog impact the size, location, and duration of the park. These activities include an attempt to submit Earth's atmosphere for inscription on UNESCO's World Heritage List.

Any state that has signed the World Heritage Convention and wants to support a World Heritage submission to the Tentative List - acting as State Party in presenting a nomination file on behalf of Earth's atmosphere - should contact this website.

PUBLIC SMOG is subject to prevailing winds, and the long-range transport of aerosols and gases.

SITE SEARCH

LINKS

- AIR POLLUTION CONTROL ZONES
- South Coast Air Quality Management District
- AIR POLLUTION MONITORING
- Stowland
- London Air Quality Network
- Global Carbon Project
- European Pollutant Emission Register
- Carbon Dioxide Information Analysis Center
- CLIMATE ACTION
- Cambridge Against Climate Change
- Carbon Trade Watch
- Climate Inequality
- Climate Justice Chicago
- Climate Rush
- Environmental Justice and Climate

IR QUALITY FORECAST

Color Map

- Stable
- Caution
- Hold
- Bug
- Superstorm

PARK SCHEDULE

LOWER PARK

The Lower Park opened to the public for the 2004 summer smog season above the Coastal Zone of California's South Coast Air Quality Management District. The Lower Park is currently closed.

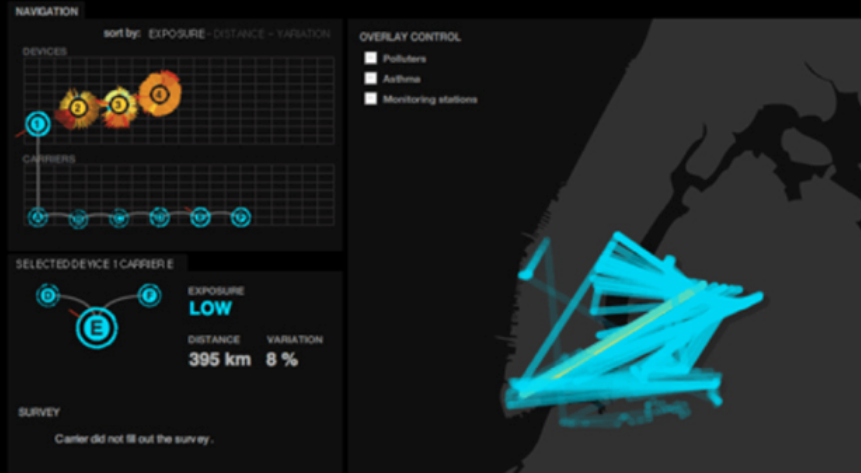
UPPER PARK

Thursday
Friday

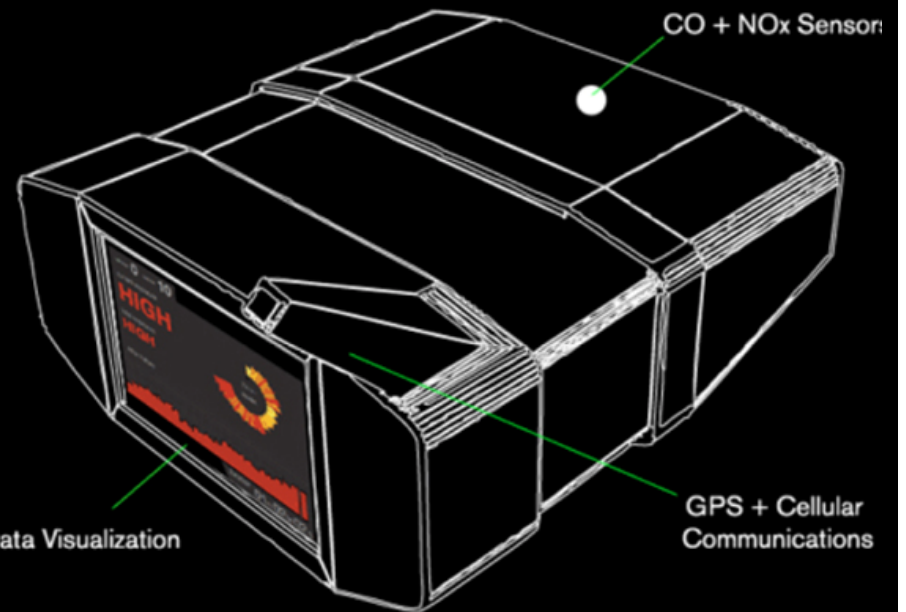
"Public Smog," Amy Balkin (2007)

AIR

AREA'S IMMEDIATE READING HIGH MID-HIGH MID MID-LOW LOW



Preemptive Media's AIR Device



"AIR" urban air quality monitoring / citizen science project, Preemptive Media (2005)

Arts, Humanities and Environmental Change— Issues and Opportunities:

- Identifying creative meetings points, beyond 2-cultures
- Contributing arts and humanities perspectives and methodologies in the structure of climate projects (not just communicating messages from “finalised” research)
- Facilitating modes of participation within climate change beyond experts-only approach
- Democratizing access to sites of science, from field production to modeling
- Disseminating work in wide-ranging venues: arts publications, academic publications, popular press



Comparison of ice samples, Greenland (2008)